



Skippers' Briefing

You're here, wow!

Welcome!

Herzlich Willkommen!

¡Bienvenido!

Benvenuto!

Velkommen!

Bienvenue!

Welkom!

Witaj!

Do not forget to support the people, who support your sport:



Up-to-date?

<http://anniversary-regatta.com/notice-board.html>

- Race Player, low-bandwidth options
- NoR + Amendment 1 & 2
- SIs, NtC #4 changing 6.2 Icebergs
- Q&A #1 re TSS
- Safety List

Expedition:



YB Tracking

Race

Example: For Rolex Middle Sea Race 2014, the race name is rmsr2014

Contact the Race Office / on- and offshore

„Offshore One“ on VHF 71.

+44 1983 30 17 17 is the 24/7 duty phone -

„Bremen Rescue“ if unavailable for any reason

Most important Contacts on SI Cover Page,
further details in Appendix B

Start – Dockout and Area

- 15+ nm through the Southern Channel (8.1m)
- Committee boat in the area of the Flexi-Marks between Spit E to the S and Kitchen Shoal to the N; regular info on VHF 71
- Check-in: close to CB, slowly on stb side; all crew in life jackets – communicate late crew changes on VHF if necessary


Start – Committee Boat



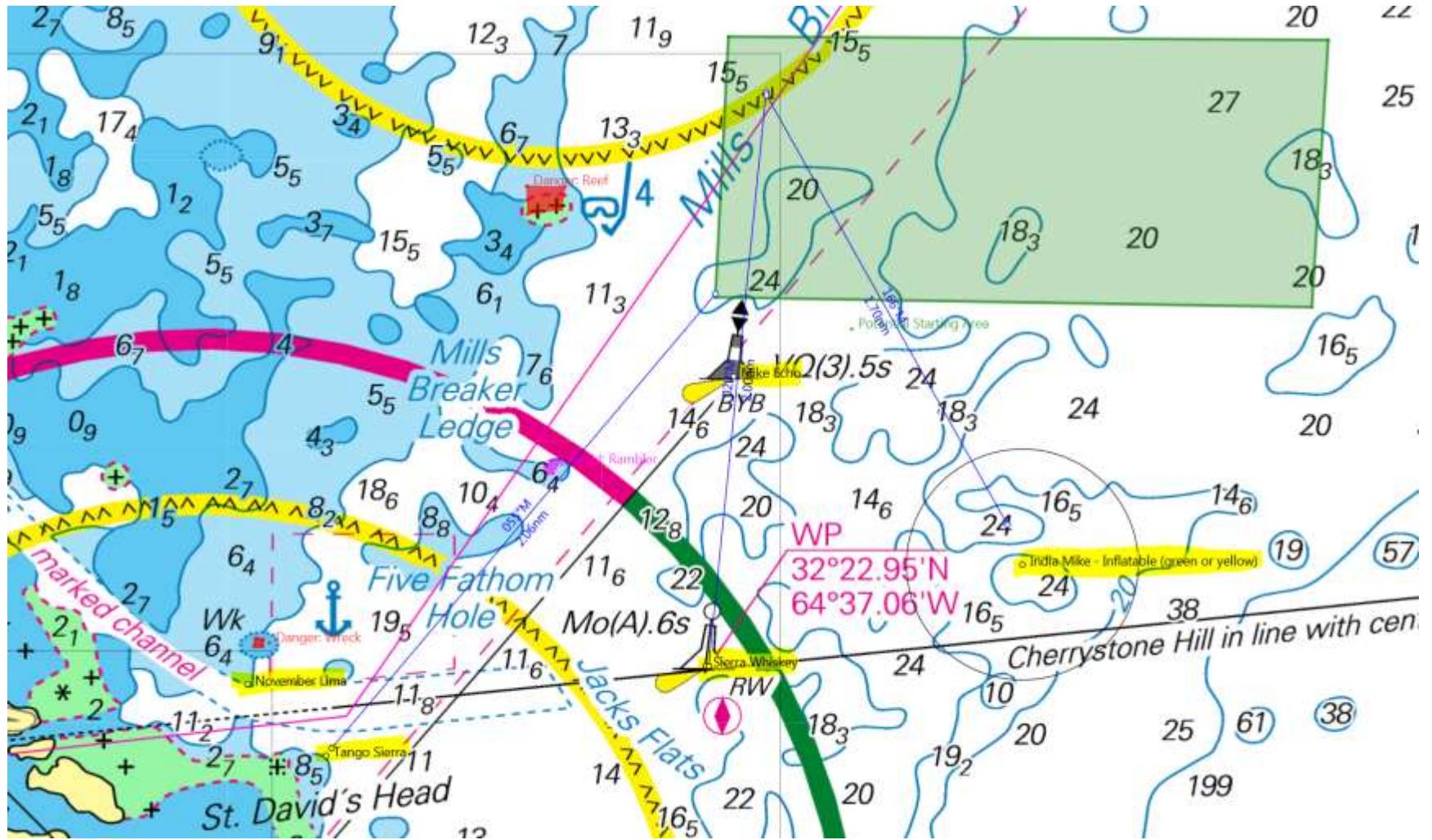
W

E

Start – Options, Warning Signal, Start

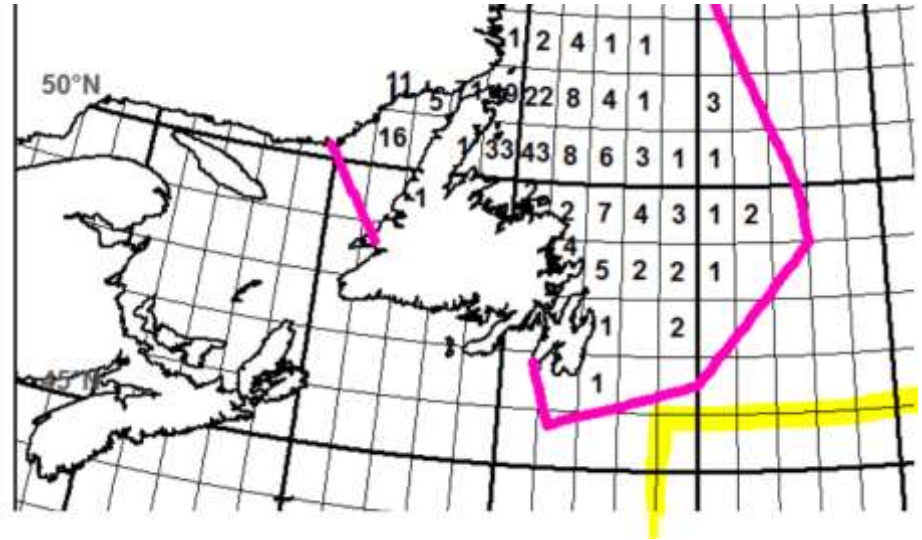
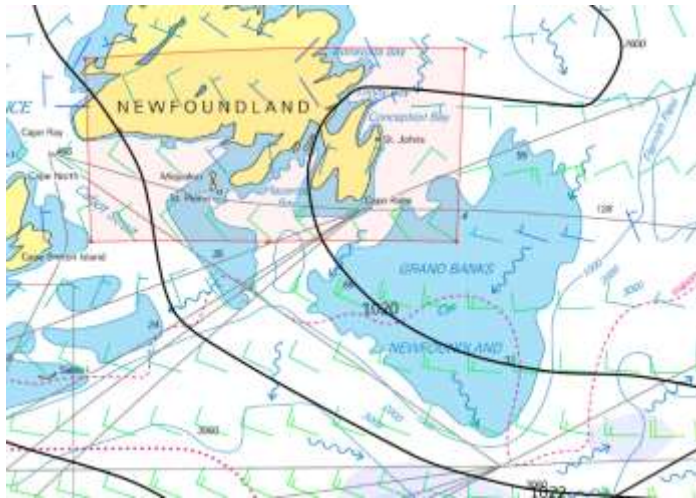
- Warning 11:55 ADT, 10 min. sequence RRS26
- Check SI 5.1; Marks for the flexi-course (different penalties)
- IC Flag „D“ (Delta) option: No flexi-course 
- VHF Countdowns for all signals but the starting signal, plus time check/orange before warning
- X-Ray: 1 minute delay for broadcast, „still displayed for“

Start – Flexi-Course



Obstructions

NAIS Report, SI 6.2
not North of N 46° whilst West of W 051°



Grand Banks; RRS 48.1 Fog Signals and Lights



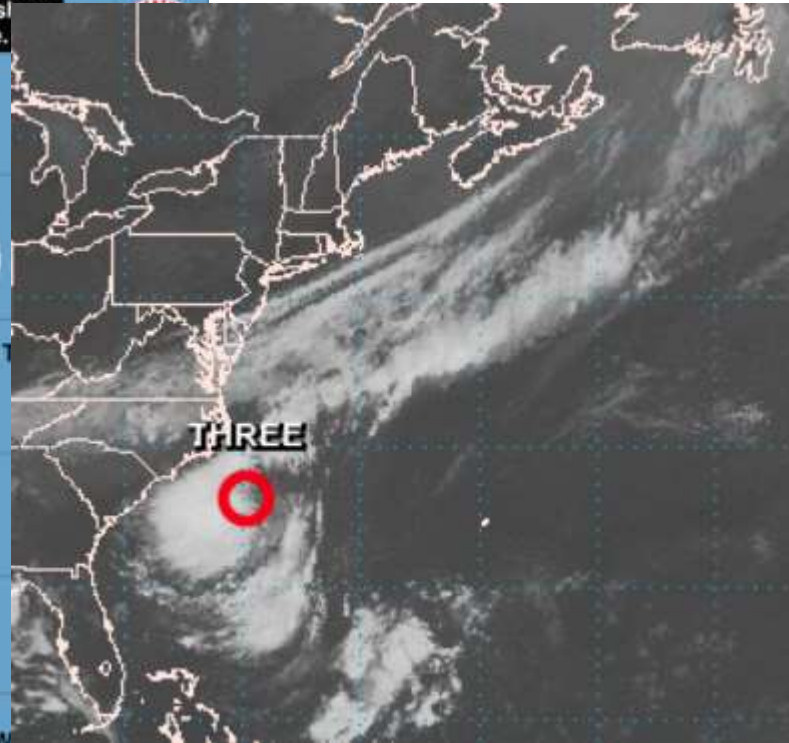
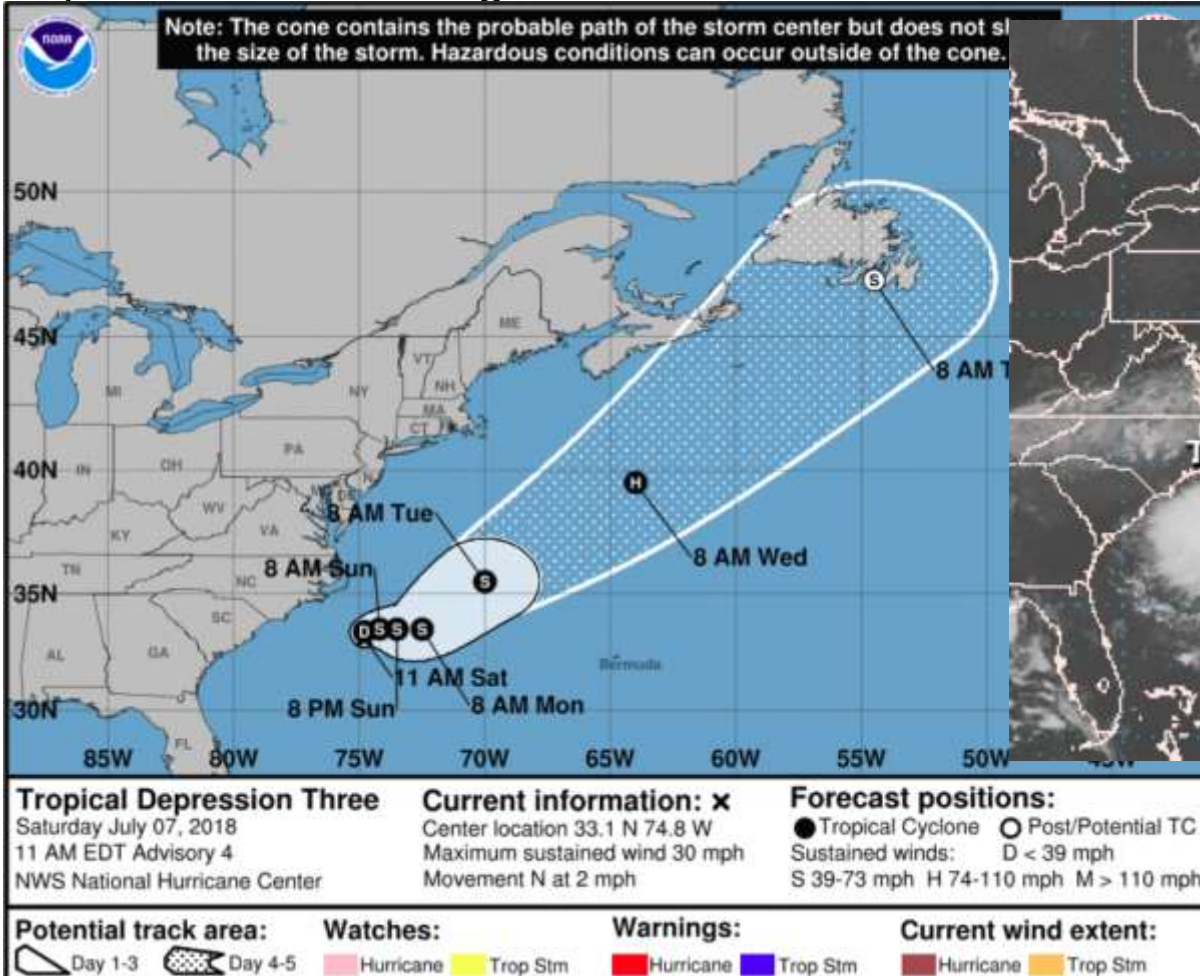
The foggiest place in
the world:

200+ days per year



Try-Sail ready and tested?

<https://www.nhc.noaa.gov/>

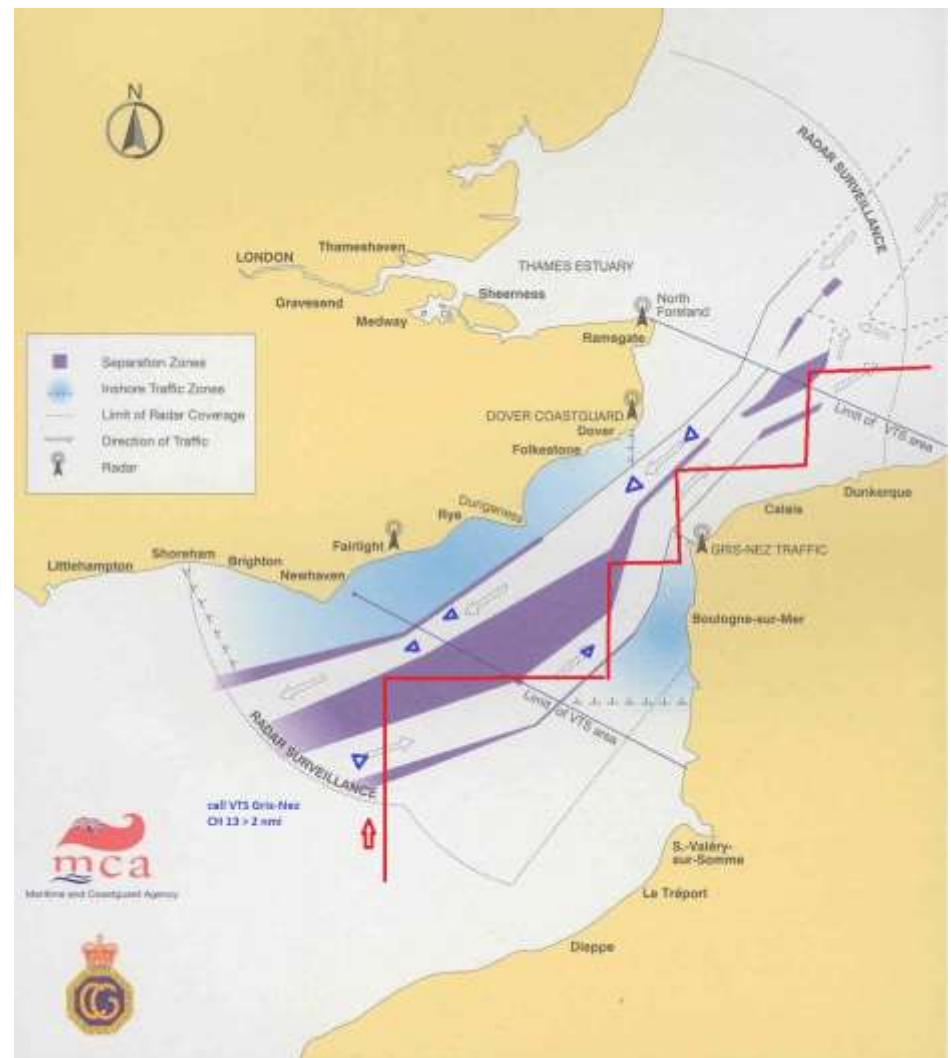


The Course

- Any questions on the course?

Traffic Separation Schemes, RRS 48.2 / IRPCAS 10

Experiences -
Stan Honey
Rambler 88, Navigator

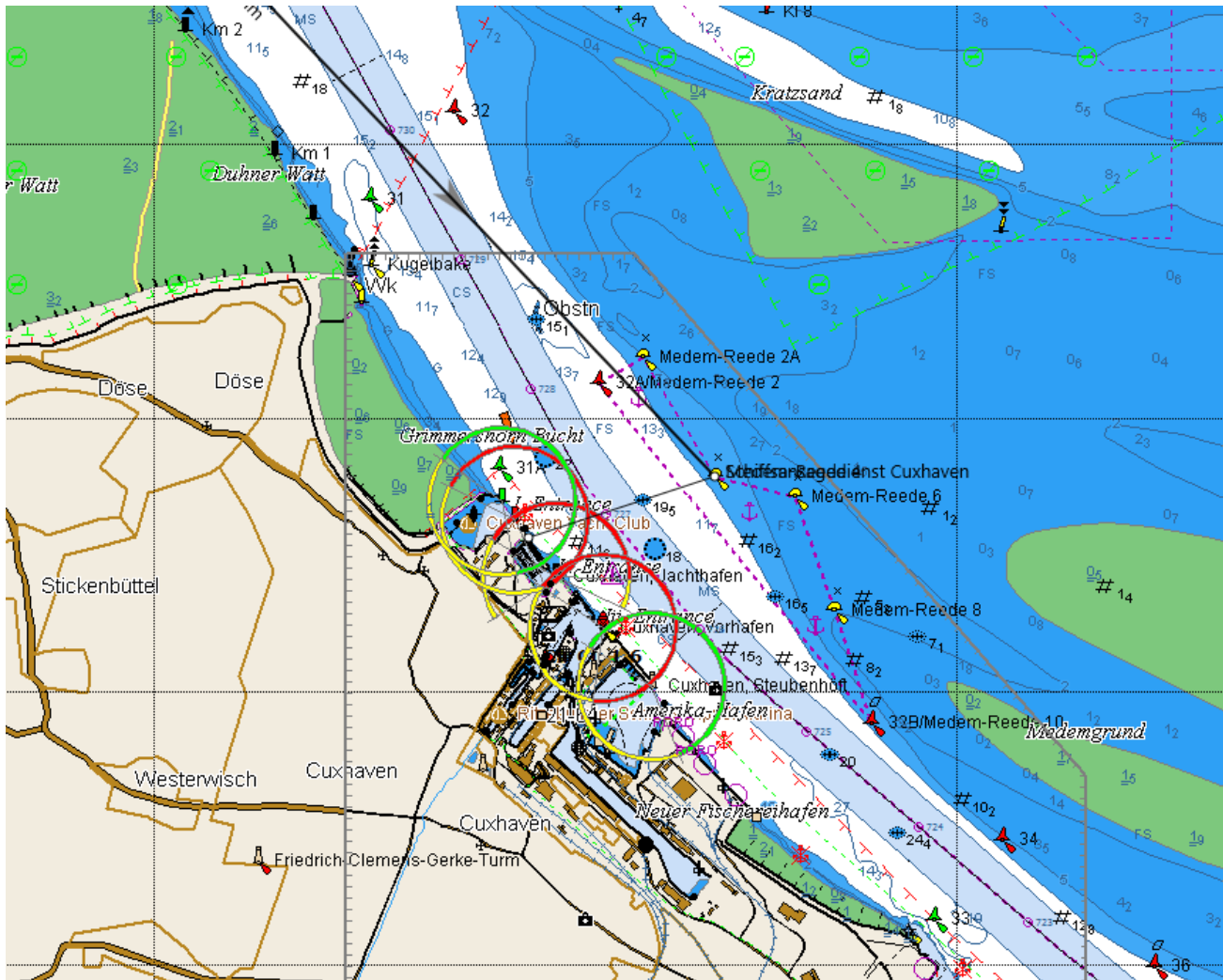


Navigator's Trophy

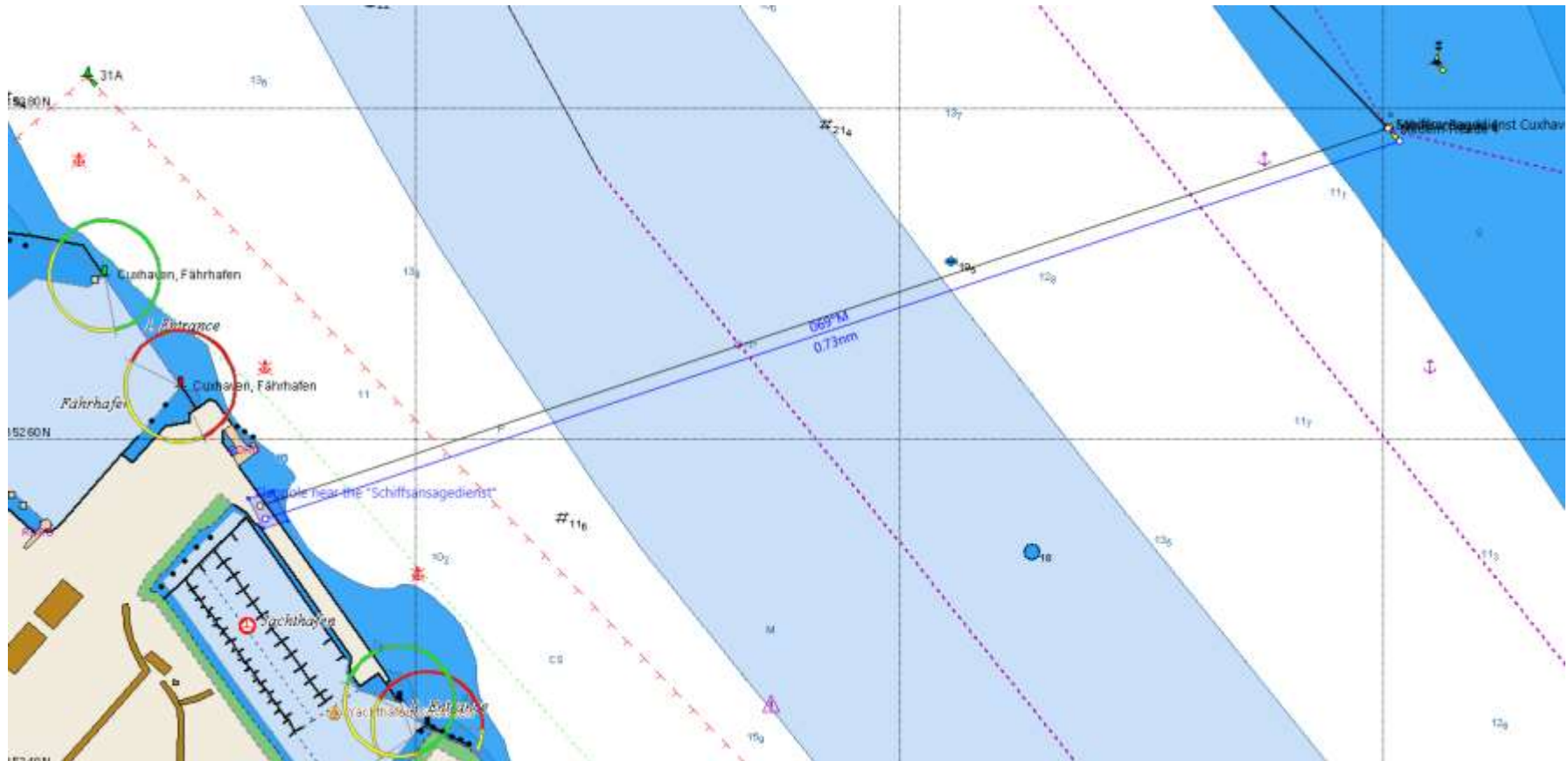
Submit ETA at the finish (include time zone if not UTC) no later than 3 hours before starting



A few days later: The finish



A few days later: The finish / detail view



A few days later: „Schiffsansagedienst Cuxhaven“



Other stuff

- Arrival: Q Flag; straight to Hamburg?
- Protests: Remote Hearings
Paul Zupan, IJ, USA; Tom Sheppard, IJ, HKG;
Michael Short, IJ, GBR; Sonia Mayes, IJ, GBR;
Didier Greze, NJ, FRA; Mufti Kling, IJ, GER
- Polars, confidential – sk@rorc.org
- SI 12.6/12.7: Use of engine – detailed logbook
- Sat Phone; noon & midnight (messages)
- List of PLB's if not on SailGate individually

Too much weight on board?

**We're looking for clothing donations for sailors
in need**